



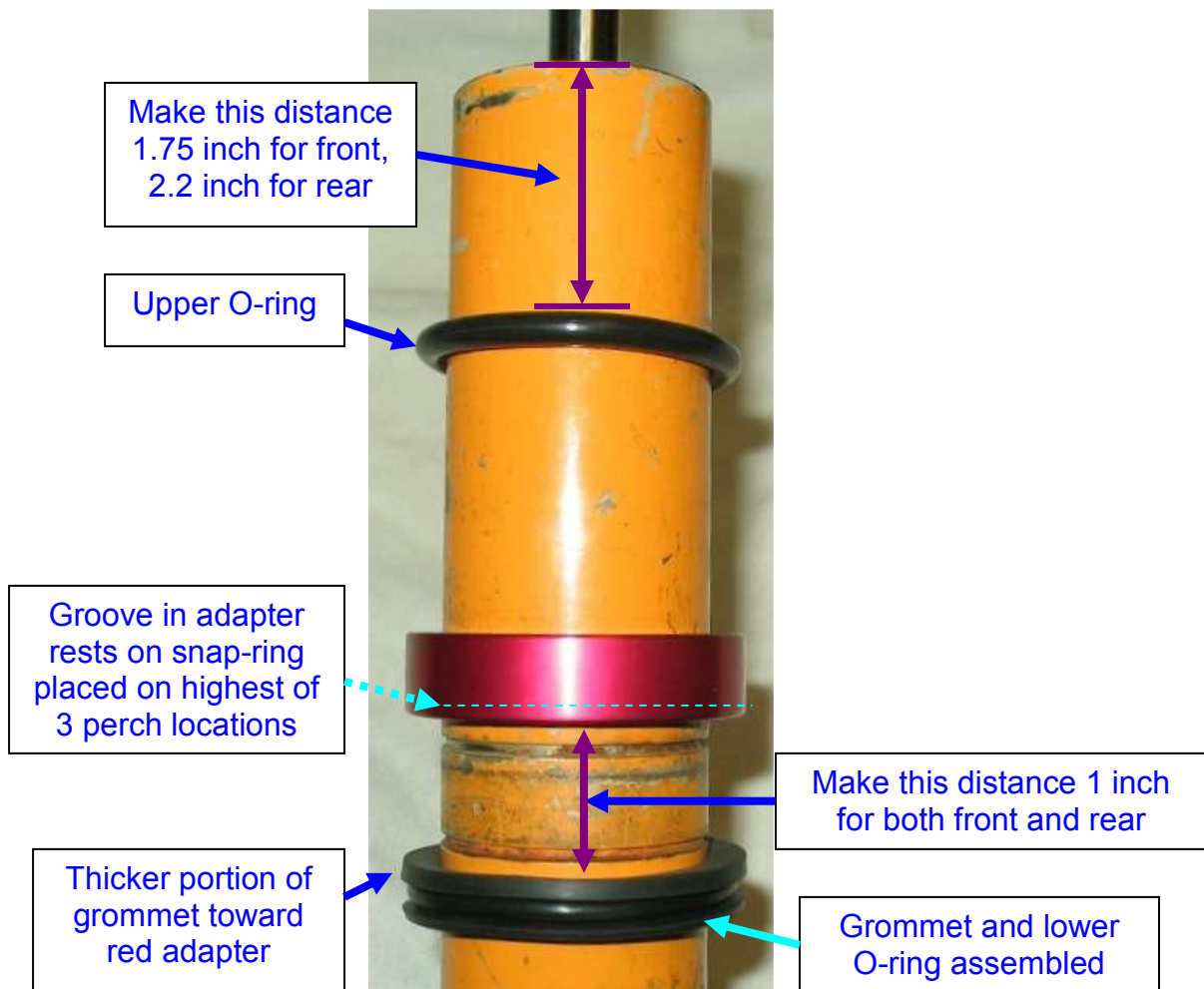
Assembly procedure for 2.5" or 3.25" adjustable spring perches, 90-05 Koni shocks

Need help? Call 408-221-8247!

Koni Sport (also called Koni Yellow) snap-ring position

1. We recommend using the highest snap-ring groove for both front and rear shocks.

Grommet and lower O-ring position.



The Complete Picture – all distances, positions and orientations shown

2. Orient the grommet with the thicker end toward the top of the shock body.
3. Slip the grommet over the top of the shock body and 'flip' or slide is down until it rests below the upper snap-ring position.



4. Slip the smaller O-ring over the shock body and slide or rotate it down until it rests inside the grommet's groove as shown above.
5. Verify the distance between the grommet and snap-ring is 1.0".

NOTE: These two gaskets work together to give added stability to the FCM sleeve when the car is under heavy cornering loads.

Koni adapter

6. Orient the Koni adapter so the groove is facing downward toward shock body.
7. Slide the adapter onto the shock body and ensure it rests snugly on the snap-ring.

Upper O-ring position

8. Slip the upper (thicker) O-ring over the shock and position it 1.75" inch below the top of the body.

Orient FCM coil-over sleeve

9. For Koni shocks, position the sleeve with the deeper groove facing the shock body as shown below.





Fasten 2.5" or 3.25" spring perch (and jam nut, if supplied) to sleeve

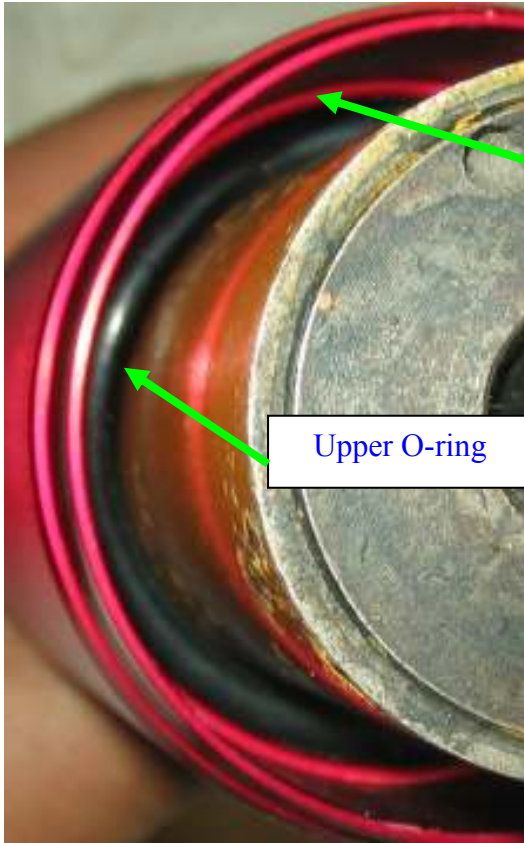
Assemble sleeve onto shock

10. Check the position of the grommet, lower O-ring, adapter, and upper O-ring before sliding the sleeve/perch onto the Koni shock body.
11. The final assembled sleeve (perches/jam nuts not shown) should appear as in the following photo:



Check upper O-ring position

12. Look from the top of the shock body, inside the sleeve.
13. Be sure the upper O-ring sits below the shelf of the inner sleeve area, as shown.
 - a. If the O-ring is not positioned correctly, take the sleeve off and adjust the position as needed
 - b. Verify the lower O-ring/grommet are still in the correct location
 - c. Slide the sleeve over the shock and re-check upper O-ring position.



Upper O-ring should sit below this shelf.

Upper O-ring

14. Continue with the general coil-over assembly instructions.